



# Synaptotagmin XVI Polyclonal Antibody

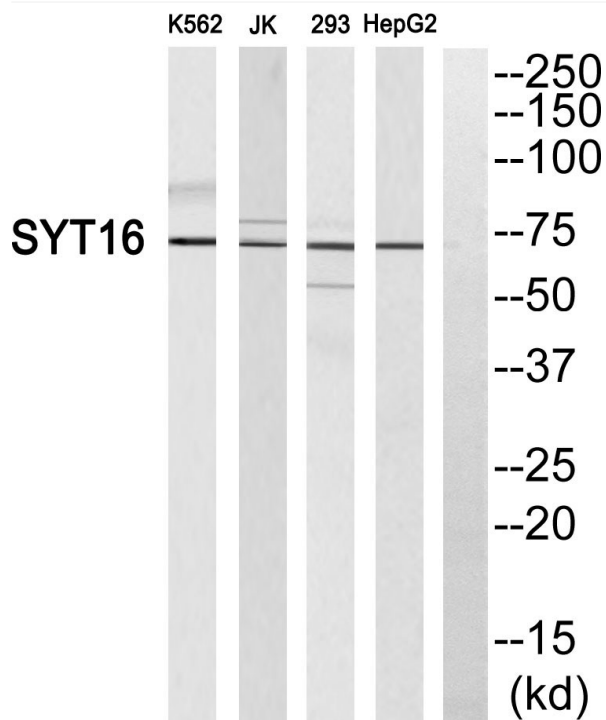
<b>Catalog No</b>	YP-Ab-00746
<b>Isotype</b>	IgG
<b>Reactivity</b>	Human;Rat;Mouse;
<b>Applications</b>	WB;ELISA
<b>Gene Name</b>	SYT16
<b>Protein Name</b>	Synaptotagmin-16
<b>Immunogen</b>	The antiserum was produced against synthesized peptide derived from human SYT16. AA range:231-280
<b>Specificity</b>	Synaptotagmin XVI Polyclonal Antibody detects endogenous levels of Synaptotagmin XVI protein.
<b>Formulation</b>	Liquid in PBS containing 50% glycerol, 0.5% BSA and 0.02% sodium azide.
<b>Source</b>	Polyclonal, Rabbit,IgG
<b>Purification</b>	The antibody was affinity-purified from rabbit antiserum by affinity-chromatography using epitope-specific immunogen.
<b>Dilution</b>	Western Blot: 1/500 - 1/2000. ELISA: 1/40000. Not yet tested in other applications.
<b>Concentration</b>	1 mg/ml
<b>Purity</b>	≥90%
<b>Storage Stability</b>	-20°C/1 year
<b>Synonyms</b>	SYT16; STREP14; SYT14L; SYT14R; Synaptotagmin-16; Chr14Syt; Synaptotagmin 14-like protein; Synaptotagmin XIV-related protein
<b>Observed Band</b>	72kD
<b>Cell Pathway</b>	plasma membrane,
<b>Tissue Specificity</b>	Expressed in brain.
<b>Function</b>	function:May be involved in the trafficking and exocytosis of secretory vesicles in non-neuronal tissues. Is Ca(2+)-independent.,sequence caution:Translated as Gln.,similarity:Belongs to the synaptotagmin family.,similarity:Contains 2 C2 domains.,subunit:Homodimer. Can also form heterodimers.,tissue specificity:Expressed in brain.,
<b>Background</b>	function:May be involved in the trafficking and exocytosis of secretory vesicles in non-neuronal tissues. Is Ca(2+)-independent.,sequence caution:Translated as Gln.,similarity:Belongs to the synaptotagmin family.,similarity:Contains 2 C2 domains.,subunit:Homodimer. Can also form heterodimers.,tissue specificity:Expressed in brain.,
<b>matters needing attention</b>	Avoid repeated freezing and thawing!



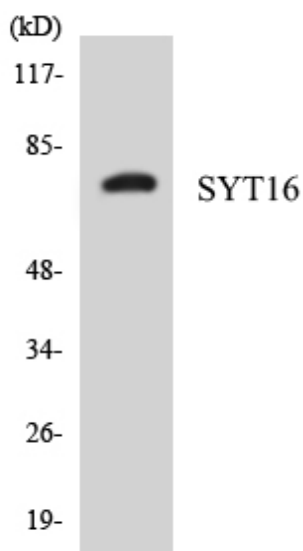
**Usage suggestions**

This product can be used in immunological reaction related experiments. For more information, please consult technical personnel.

**Products Images**



Western blot analysis of SYT16 Antibody. The lane on the right is blocked with the SYT16 peptide.



Western blot analysis of the lysates from HepG2 cells using SYT16 antibody.